

CAPE DORY 28



CAPE DORY 28

The sailing qualities of the Cape Dory 28 are a compliment to her good looks: Carl Alberg designed this one to have the ideal sailing characteristics of a cruising boat — comfort, stability, stiffness, predictable handling and speed. The 28 has them all, as well as a finish that makes even the novice sailor feel easy and at home above or below.

The well-behaved performance of this boat is the result of a combination of many factors: full keel with attached rudder for steady tracking downwind, and good performance to windward; the ballast is molded lead, placed low inside the keel (then glassed in) to give the boat stiffness and stability. The hull is designed for exceptional light air performance and the ability to take a breeze and handle it when the rigging begins to sing. The sailplan is enlarged by the bowsprit, and kept full (without the necessity of a genoa) by using a lower aspect ratio mainsail. By keeping the mast a little shorter, and making the boom a bit longer than you'll find on racing machines, performance goes up without annoying and frustrating sail changes. Just to keep a sensible sailplan really simple, there is a jiffy reefing system standard on the mainsail.

The jib has a fixed foot — on a jib boom. The Club Jib sheets in closer to the centerline of the boat, and is self-tending when tacking, like a mainsail. So, once you're properly trimmed you can tack your Cape Dory 28 without having to tend any sheets.

A bridge deck cockpit was added for 1978. This feature has added more room to the after part of the galley as well as adding to the security of the boat. The self bailing cockpit is surrounded by teak coamings and rails, and bronze hardware. The cockpit seats open up to provide stowage for sails, lines and gear.

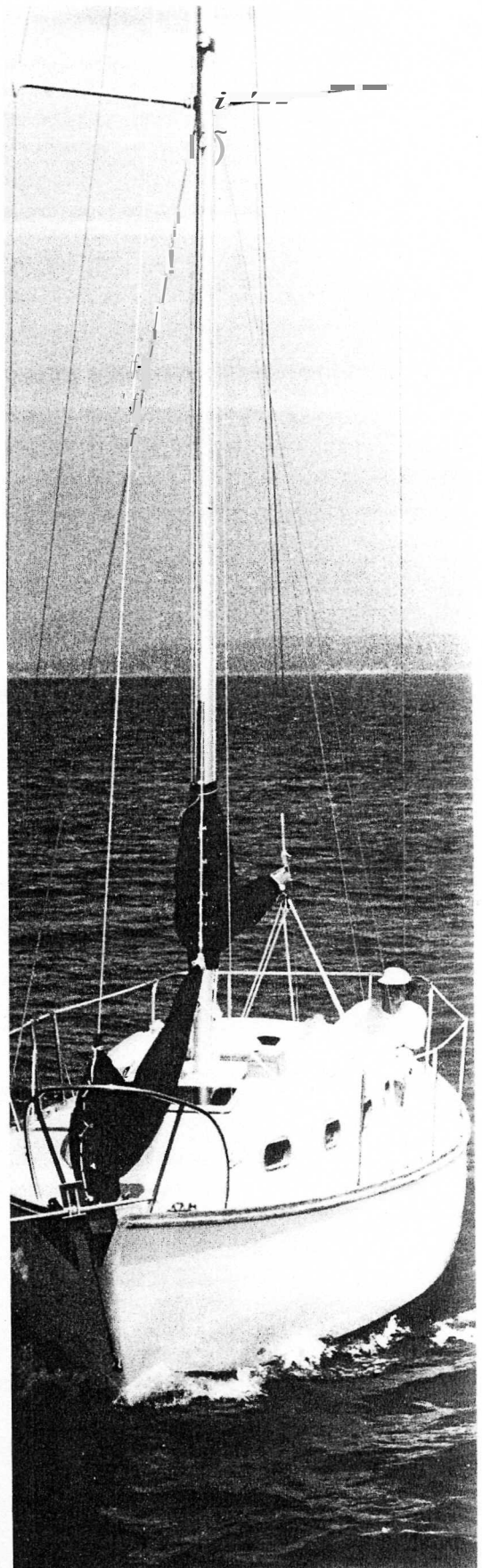
The cabins and head are exceptionally bright and airy, since there are eight bronze opening ports, as well as a skylight over the center of the main cabin, and a skylight hatch in the forward cabin. Colorful decorator fabrics on all cushions add to the warm feeling generated from the handsome hardwood joinerwork.

The Cape Dory 28 sleeps five — with a slide-out double berth to port in the main cabin, a generously-sized berth to starboard, and large vee berth in the forward cabin. There is a generous amount of storage located in lockers under the forward bunks, and elsewhere throughout the boat. The 1978 Cape Dory 28 has a redesigned interior liner. This is something you will never see, but it adds to your comfort by keeping lockers and their contents drier and fresher-smelling than before.

As with all of the boats built by Cape Dory, there is an extra element of quality in materials and workmanship that just doesn't always seem to be there on some of the other boats you look at. Study the pictures and brochures until you're ready to see the real difference. Then go see for yourself. The Cape Dory 28 is the class of the fleet.

Wouldn't you like someone to say that about your next boat?

From bowsprit to stern rail the Cape Dory 28 is shipshape.

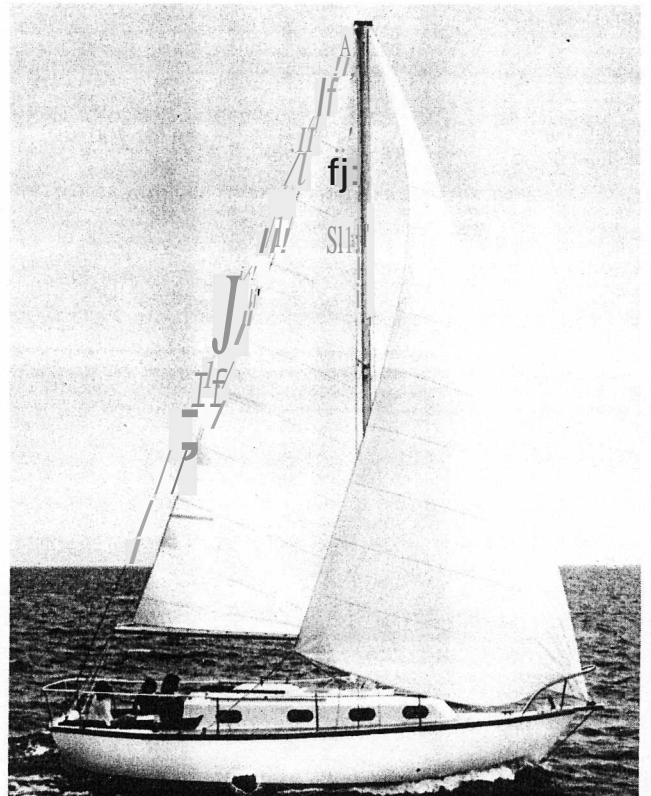
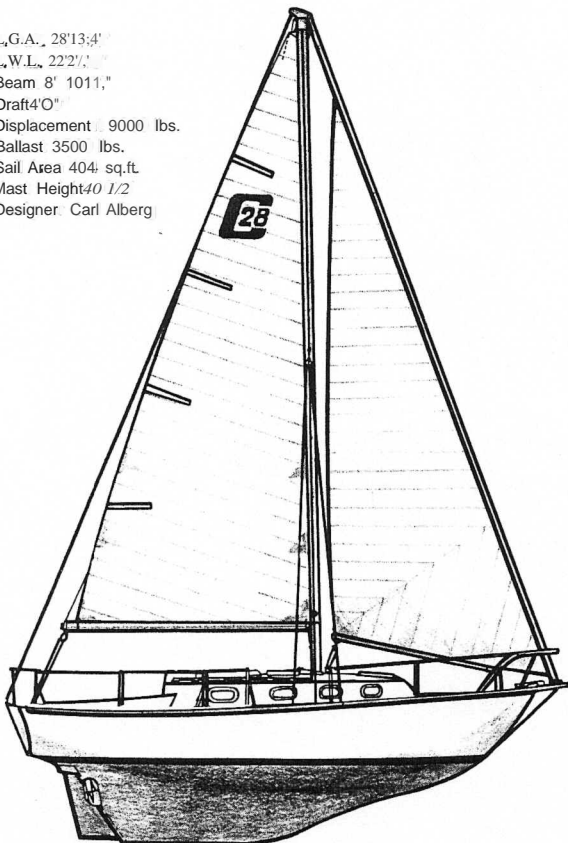


Full keel for stiffness when the puffs come

CAPE DORY 28



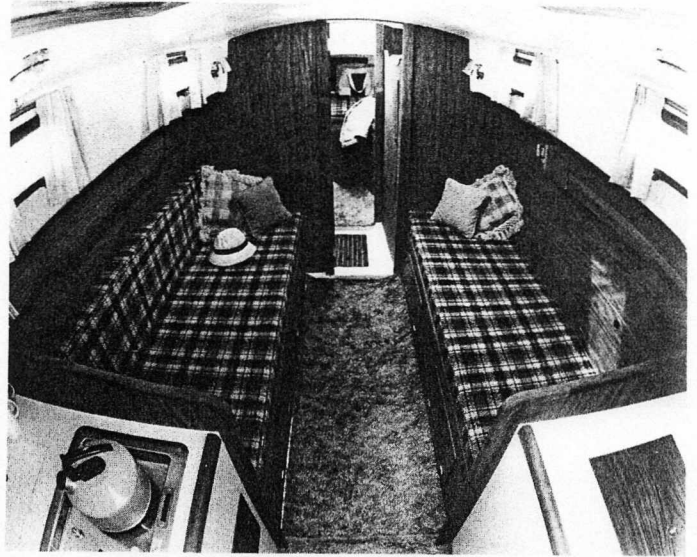
L.G.A., 28'13 1/4"
L.W.L., 22'2 1/2"
Beam 8' 10 1/2"
Draft 4'0"
Displacement 9000 lbs.
Ballast 3500 lbs.
Sail Area 404 sq.ft.
Mast Height 40 1/2"
Designer: Carl Alberg



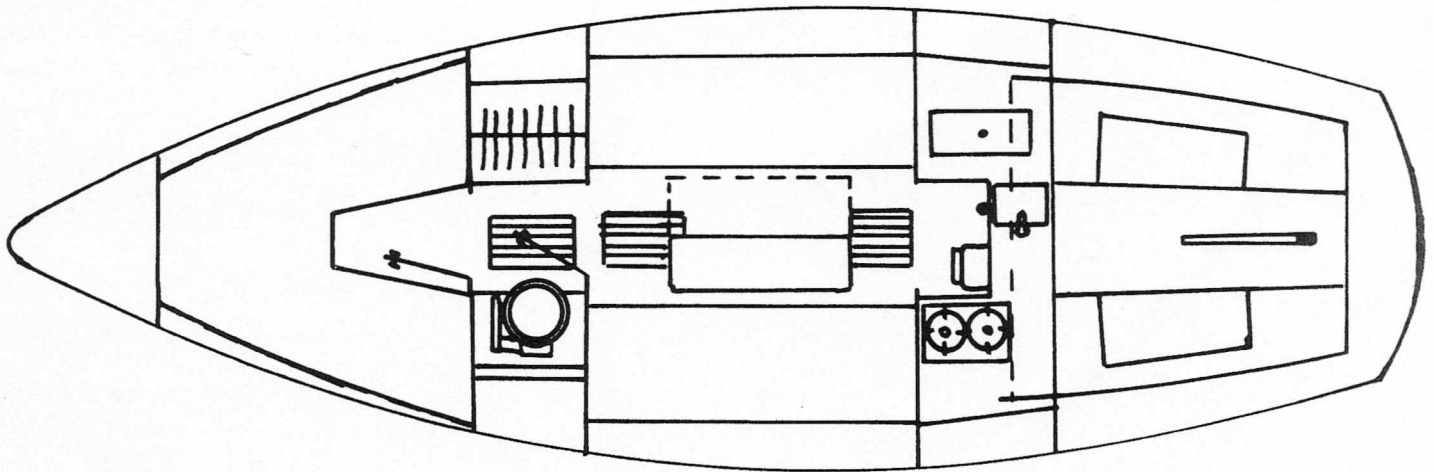
CAPE DORY 28



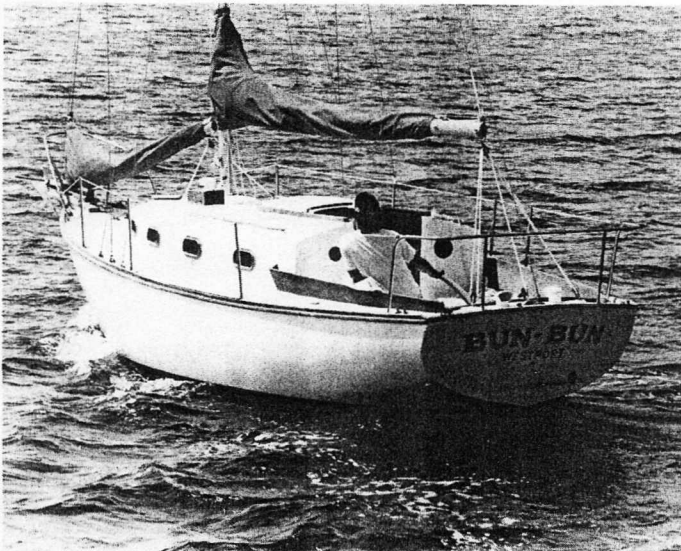
1978 models feature a redesigned galley area



The port berth converts to a double



Sail or power, she's easy to handle



The two burner stove is standard

