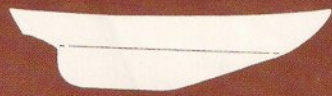


CAPE DORY
33



...a standard of value



CAPE DORY 33...a standard of value

CAPE DORY

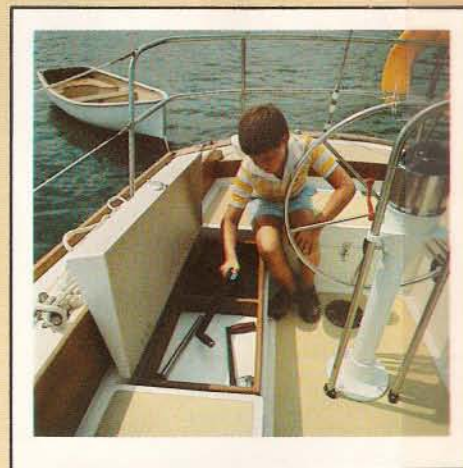
CAPE DORY STORY:

When Andrew C. Vavolotis, founder and president of Cape Dory Yachts, Inc., built his first boat, his goal was to build a boat that sailed well, looked good, and met his high standards of quality. That was 17 years ago. His one man workshop is now a modern, highly efficient boatbuilding facility producing *full keel* boats for use all over the world.

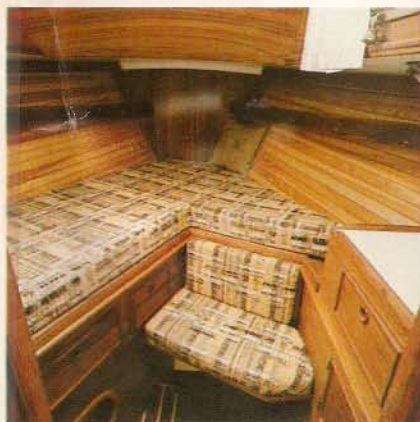
The Cape Dory ideal has not changed in all these years. The basic "quality control" principles upon which Cape Dory was founded are still rigidly adhered to. Every step in production is carefully controlled and engineered. All work is closely inspected. An in-plant lab tests and checks materials. Each yacht is a credit to her owner and builder.

There is yet another man behind the success of a Cape Dory Yacht . . . Carl Alberg, noted naval architect. His *full keel* with attached rudder designs have withstood the tests of time and sea. The Cape Dory/Carl Alberg team has succeeded in creating new, safe, comfortable vessels, without compromising quality or sailing performance.

The graceful lines of Cape Dory Yachts are timeless. They will be as contemporary in another decade as they are now. More than anything else, the element that produces boats of Cape Dory's quality is the attention to detail by the men who build them.



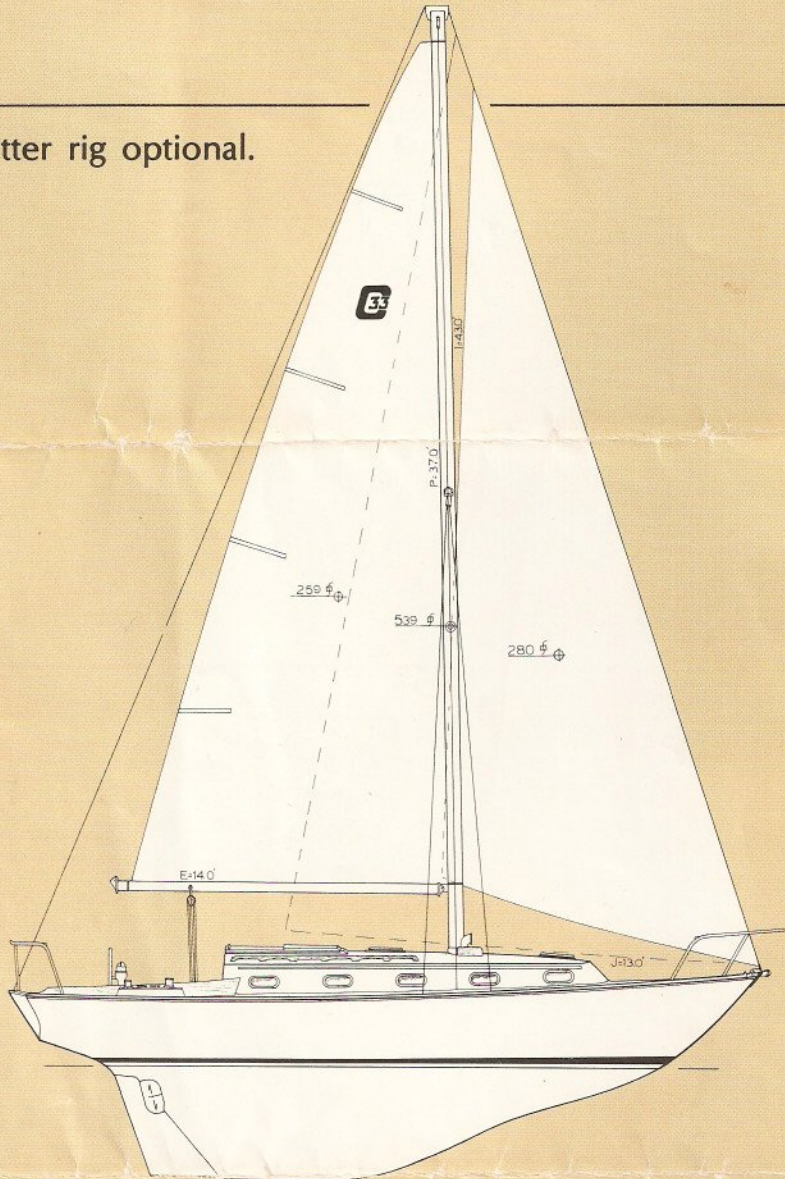
33...a standard of value



CAPE DORY 33...a standard of value



Cutter rig optional.



Specifications

L.O.A.	33' 1/2"
L.W.L.	24' 6"
Beam	10' 3"
Draft	4' 10"
Displacement	13,300 lbs.
Ballast	5,500 lbs.
Sail Area	546 sq. ft.
Designer	Carl Alberg
Cutter rig optional.	

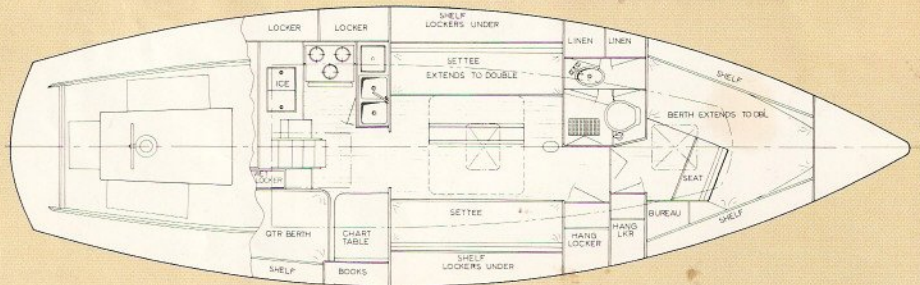
Cape Dory...a standard of value

The 33 shares the same proud reputation as the other 3,600 *full keel* yachts built by this owner-operated company since its founding in 1963. Cape Dory has consistently built boats of enviable quality and proven design. Boats that have withstood the relentless tests of sea and time. Solid sailboats; solid investments.

Before you decide on any boat...visit your nearest dealer and inspect a Cape Dory to fully understand boat-building excellence...see how stable, responsive boats are built.

Write for a free catalog of the Cape Dory 19, 22, 22D, 25D, 27, 28, 30, 31, 36 or 45. Enclose \$5 and we'll forward an Owner's Manual.

Cape Dory Yachts reserves the right to alter prices and specifications without notice. Photos may show some optional equipment.



CAPE DORY YACHTS