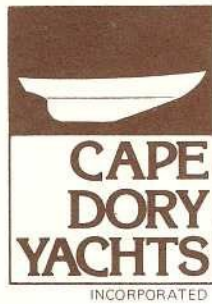


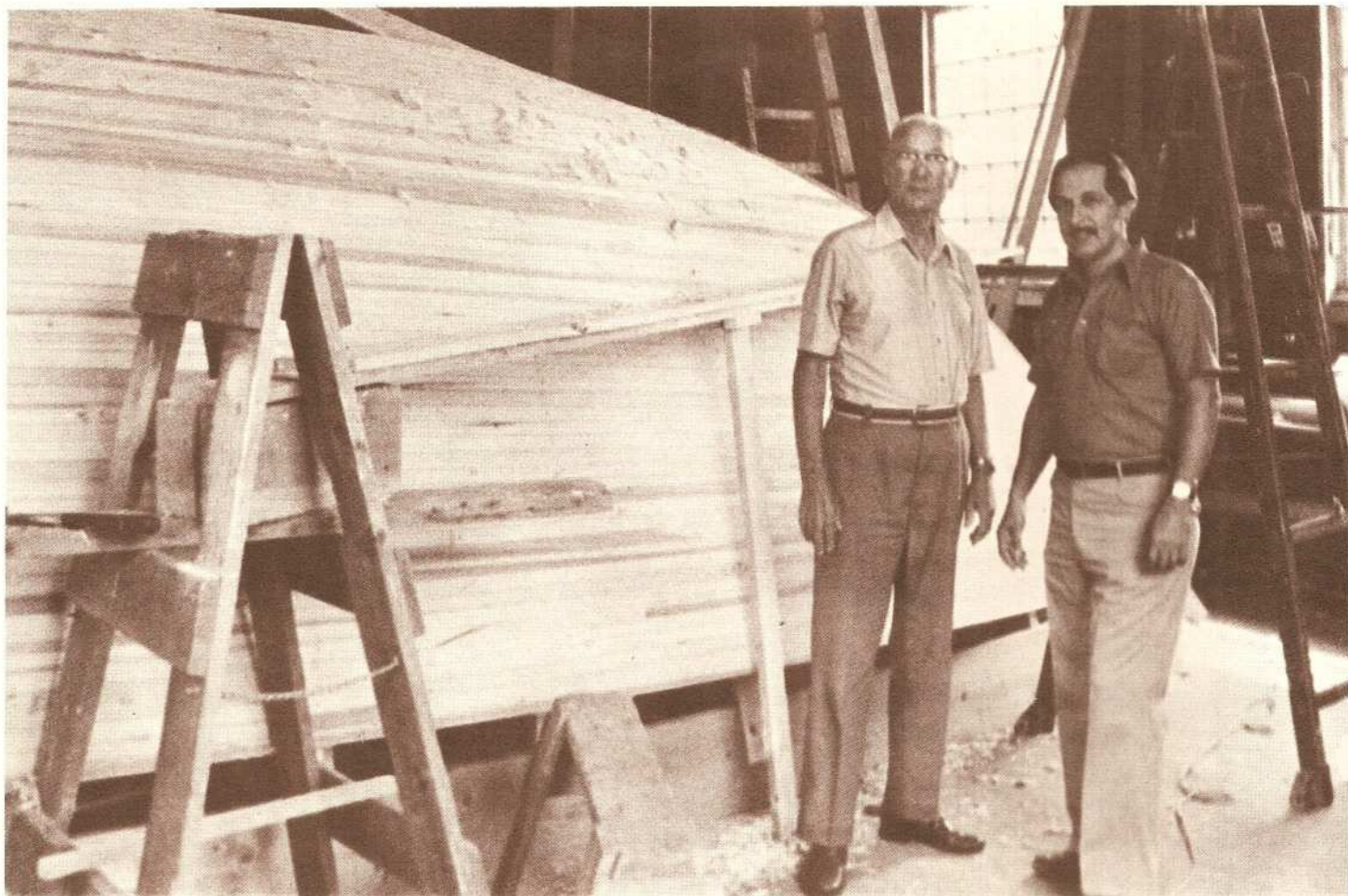
The CAPE DORY 33



***Introducing a Powerful New Sloop
Built by Cape Dory Yachts
Designed by Carl Alberg
For Exceptional Coastal Cruising Performance
and Offshore Passage Making.***

160 Middleboro Avenue, East Taunton, Massachusetts 02718 (617) 823-6776

Carl Alberg's Newest Design, Adds a High Performance Coastal Cruiser and Blue Water Passagemaker to the Cape Dory Fleet



Carl Alberg and Andy Vavolotis with the hull plug of the new Cape Dory 33

AN ELEVEN YEAR DESIGNER/BUILDER PARTNERSHIP

The Carl Alberg designed, Cape Dory built 33 foot cruising sloop is the latest product of a highly successful designer/builder partnership which has produced more than 3,000 sailboats and auxiliaries during the past eleven years. Today, these vessels, ranging in size from the 19 foot Typhoon to the 36 foot cutter, are a familiar sight in yachting centers from coast to coast. Noted for their full keels with attached rudders these seaworthy craft have proven themselves to be stiff, safe, dependable performers after countless thousands of miles, cruising inland and coastal waters and making extended passages offshore.

In calling once again upon the genius and design skills of one of the world's most experienced and best known naval architects, Cape Dory sought a seakindly full keel design combining the swiftness and handling qualities of the sloop rig with a roomy, powerful hull, amply ballasted and strongly built for both coastal cruising and blue water work. The result, in Carl Alberg's own words has been "... a practical, uncomplicated yacht which will be a pleasure to own and to cruise for years to come. An ageless design with perpetual value."

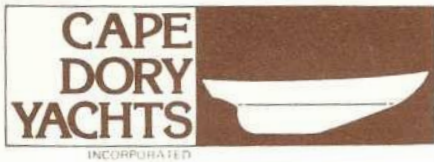
The new Cape Dory 33 reflects the elements of Carl Alberg's traditional designs and the very latest developments to evolve in his eleven year association with Cape Dory.

Like her predecessors the CD-33 is exceptionally well pro-

portioned and aesthetically balanced. Her pleasing sheer, moderate freeboard and low coach roof silhouette give her a look of genuine beauty. Her ample beam is carried well aft, producing roominess below in keeping with today's trends toward increased interior space and living comfort.

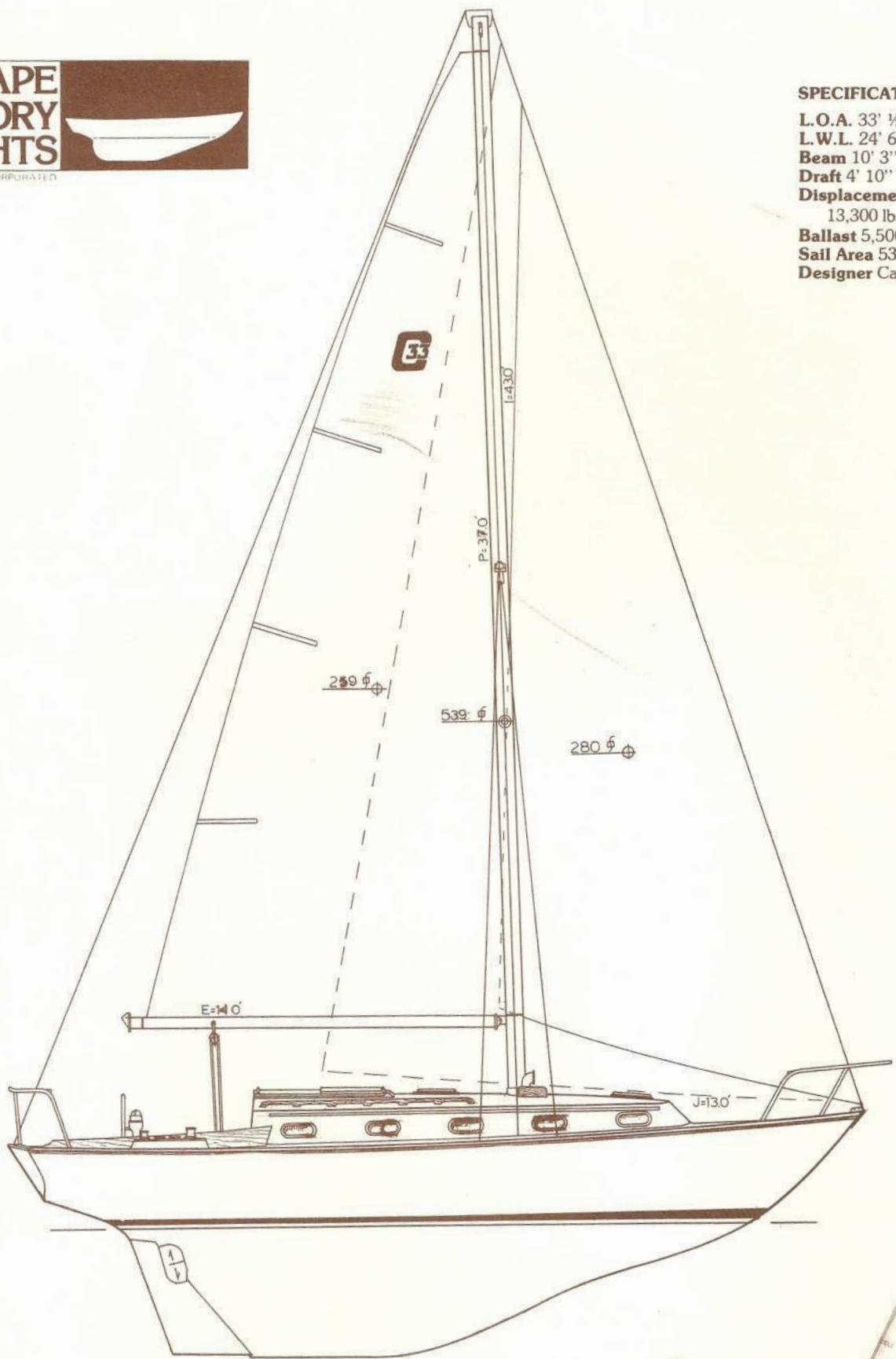
The CD-33's powerful, tall sloop rig assures her ability to perform smartly in light to fresh airs while her substantial ballast, securely glassed deep within her full keel assures stability and stiff performance in heavy weather. Moderately firm bilge sections and the long, smooth run of the full keel from stem to the attached rudder, create ease of handling and the ability to track effortlessly downwind which will be especially appreciated when making long passages.

Despite her capabilities for offshore work, the Cape Dory 33 is far from being a spartan, single purpose yacht. She was designed to be equally well suited for the gentle breezes of an afternoon's sail or a weekend cruise. Her more than ample sheet and halyard winches, jiffy reefing gear and pedestal steering with mounted engine controls make her easy to sail short or single handed. Whether your plans are primarily for weekending and short cruises or for extended voyaging and living aboard, the Cape Dory 33 will provide unending pleasure and pride of ownership.



SPECIFICATIONS

L.O.A. 33' ½"
L.W.L. 24' 6"
Beam 10' 3"
Draft 4' 10"
Displacement
 13,300 lbs.
Ballast 5,500 lbs.
Sail Area 539 sq. ft.
Designer Carl Alberg



TYPHOON
19'



CD 25



CD 27



CD 28



Cutter or Ketch CD 30



CD 36



Highlights of the Cape Dory 33

THE HULL: The CD-33 hull is one piece fiberglass, molded in a very carefully controlled environment of temperature and humidity. Under the most ideal conditions alternate layers of mat and woven roving are painstakingly laminated to just the right thickness. Five thousand, five hundred pounds of internal ballast is placed deep in the keel, completely encapsulated and securely glassed over.

DECK AND COCKPIT: The deck is one piece molded fiberglass reinforced with end grain balsa core for stiffness and insulation. There is a sliding companionway hatch with seahood and drop boards. The deck is mechanically fastened to the hull, bolted on 12" centers with screws for toe rails on 10" centers passing through the same joint. Teak coamings, taff rail, toe rails, grab rails and trim immeasurably enhance her overall custom built appearance. The self bailing cockpit with two 1½" scuppers is very well proportioned to the 33's overall size with 7 foot plus seats which will afford comfortable sleeping top-side when cruising in warmer climes. Three large cockpit lockers provide substantial stowage capacity for sails and sailing gear.

INTERIOR: The interior of the 33 is beautifully finished in the finest quality teak with ash ceilings, teak and holly sole and formica counters. A great deal of attention has been paid to all important stowage and storage. Many draws, lockers, shelves, racks and cupboards have been carefully fitted utilizing all available space with maximum efficiency. Food, clothing, cooking utensils and miscellaneous personal belongings have all been carefully planned for. Aboard the CD-33 you'll have a place for everything and room for everything in its place.

Adequate ventilation is one of the most essential factors assuring a comfortable and eminently liveable boat. Here the Cape Dory 33 really excels. There are 10 bronze opening ports, two dorade ventilators and two lexan skylights to permit the free flow of fresh air in all directions and afford a naturally well lighted interior.

THE MAIN CABIN: The main cabin is well laid out and extremely functional for both sleeping and eating as well as entertaining on board. There is a large settee berth to port which extends to form a double berth with storage under, and lockers and shelf above. A single settee berth to starboard, with lockers and shelf above and a quarter berth aft, round out accommodations for four. A large, fixed drop leaf table affords comfortable service for six at meals. The navigator's station and chart table located to starboard between the berths provides ample working room and chart storage space. Several small draws are available for the navigator's tools and instruments. Just starboard of the companionway is a self-draining hanging locker for stowage of wet foul weather gear when coming below.

THE GALLEY: The Cape Dory 33 galley features the "U" shape design, a most efficient and convenient way to lay out a

cooking area aboard a cruising auxiliary. It affords ample working room, putting all storage areas, ice box, sink and stove within easy reach while keeping the cook out of companionway traffic. It also affords a sheltered, protected area when meals must be prepared under adverse conditions at sea. The 33's galley includes a deep, double, stainless steel sink, with hot and cold pressure water and an auxiliary foot pump, a three burner alcohol stove with oven and a large, well insulated top loading ice box. There is more than ample stowage with numerous draws, lockers, dish racks and a top loading storage compartment outboard of the sink.

THE FORWARD CABIN: The unique, opening double berth in the forward stateroom affords comfortable accommodations for two. There are five draws and lockers for stowage, two opening ports and a Lexan hatch for ventilation and light. Four inch fabric covered foam cushions are standard here and throughout the boat.

THE LAVATORY: The CD-33's lavatory is well thought out with plenty of room to move around without infringement upon space needed for the forward cabin. A large wash basin with hot and cold pressure water, telephone style shower with teak grate and electric sump combined with a laundry hamper and several draws and lockers make the area highly functional, orderly and liveable. The toilet is equipped with a 24 gallon holding tank with discharge fitting in the anchor well. There is an opening port and dorades for ventilation.

HANGING LOCKERS: Opposite the lavatory compartment are two spacious hanging lockers. This extra locker storage capacity will be welcomed by weekend sailors and liveaboards alike . . . especially, when guests come aboard.

ANCHOR WELL: A most functional on deck feature of the CD-33 is her self-draining anchor well and chain locker. This storage compartment with access via a hinged fiberglass hatch permits quick and convenient stowage of ground tackle upon getting under way. A stemhead roller facilitates anchor handling.

AUXILIARY POWER: The Cape Dory 33's auxiliary power is provided by a 2 cylinder Volvo MD 11C 23 h.p. Diesel engine with a 1.91 to 1 reduction gear and MS Volvo transmission. Controls and instrumentation include pedestal mounted throttle and forward and reverse gear, waterproof starting switch, tachometer, water temperature gauge, indicator lights for amperage and oil pressure, large fuel tank with fuel level gauge, dual fuel filters, deck fill and vent. There is a waterlock muffler with wire reinforced multi-ply exhaust hose. The well insulated engine room has large access panels which may be easily removed for servicing from either the cockpit or the main cabin.

STEERING SYSTEM: The Edson steering system has a destroyer style stainless steel wheel. Pedestal mounted engine controls are standard. The rudder post is solid stainless steel.

ELECTRICAL EQUIPMENT: 12 Volt panel with circuit breakers, volt meter dual battery level monitoring, two marine batteries with vapor proof switch, stranded copper wiring. Complete 12 volt lighting system includes eleven dome lights, one swivel light and three florescent fixtures. Navigation lights meet international standards. Lightning ground system.

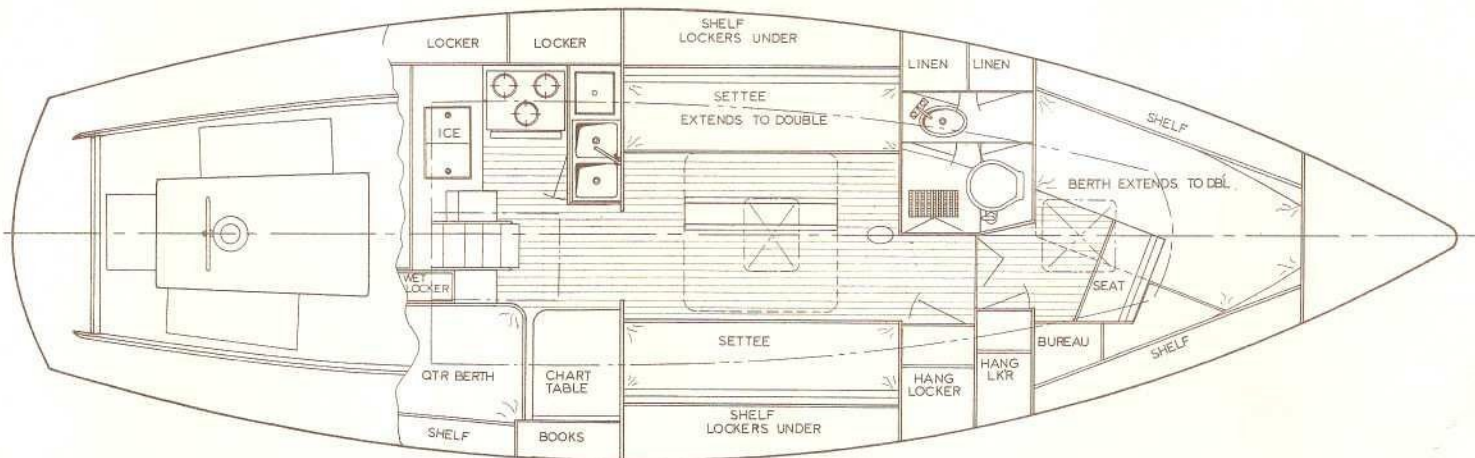
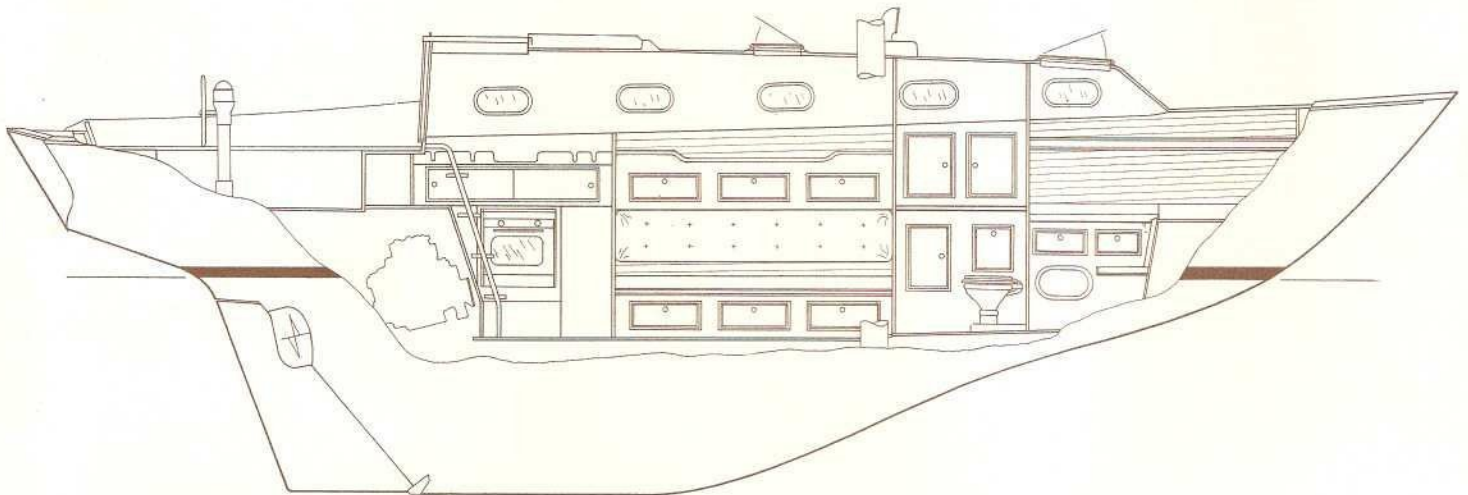
PLUMBING: 60 gallons of water in two tanks with removeable covers for clean-out, deck fill vents, shut-off valves on supply lines. Sinks are stainless steel, marine toilet, all through hull fittings below the water line are fitted with bonded seacocks, manual diaphragm pump located in cockpit for bilge.

SPARS AND RIGGING: The Cape Dory 33 rigging plan has been well thought out to provide optimum efficiency, strength and sailing performance. 6061 T6 alloy mast with internal track section, Awlgrippped boom, stainless steel tangs, halyard cleats, sheets, blocks and topping lift, forged bronze turnbuckles,

headstay, backstay and upper shrouds are 9/32" 1 x 19 stainless steel. Lower shrouds, intermediate shrouds are 1/4" 1 x 19 stainless steel wire. Halyards are 1/2" pre-stitched dacron line. All turnbuckles are fitted with integral toggles. Mast stepped on keel. An unusual design feature is the working jib sail tracks. These are recessed flush with the deck well inboard close to the cabin trunk. This affords a very tight sheeting angle for maximum windward performance.

HARDWARE AND DECK FITTINGS: Bronze, stainless steel and special marine alloys. Custom castings throughout. Port and starboard bow chocks, 10" bow cleats, stern cleats and stern chocks, stainless steel stanchions, bow and stern pulpits and vinyl covered double lifelines, genoa tracks through bolted to toe rails, Edson binnacle fitted with destroyer wheel, throttle and shift levers, emergency tiller.

OPTIONS: There is a choice of colors for interior decor. A selection of factory installed equipment is available. Cape Dory Yachts reserves the right to alter specifications and details without notice.



CAPE DORY 33/STANDARD EQUIPMENT

(ALSO AVAILABLE WITH CUTTER RIG)

HULL:

Teak Rub Strakes
Teak Toe Rails
Painted Boot Top
Anti-fouling Bottom Paint
Internal Molded Lead Ballast (5200 lbs.)
Solid 1½" Stainless Steel Rudder Post
Bronze Rudder Shoe
U.L. Listed Bronze Seacocks
Seacock Handles
Full Keel with Attached Rudder
Hull Molded in One Piece (Hand Layed)
Shipping and Storage Cradle

DECK:

Balsa Cored Deck
Molded-in Non Skid
Teak Taff Rails
Teak Coamings
Teak Grab Rails
Offshore Cockpit
Sail Lockers
Lazarette
Scuppered Seat Hatches
Companionway Hatch Seahood
Teak Drop Boards
Teak Companionway Framing
Bronze Stemhead with Anchor Roller
Uni-directional Laminant in Highly Stressed Areas

DECK HARDWARE & FITTINGS:

Pedestal Wheel Steering
Pedestal Mounted Engine Controls
Pedestal Guard
10" Bow Cleats (2) Bronze
Large Bow Chocks (2) Bronze
8" Stern Cleats (2) Bronze
Stern Chocks (2) Bronze
6' Genoa Track
2 Speed Genoa Winches
Molded in Winch Islands
Genoa Sheet Cleats (Bronze)
10" Lock in Winch Handle
Main Sheet Traveler
Aluminum Lexan Deck Hatches (2)
Bronze Opening Ports (10)
Teak Dorade Ventilators
Anchor Roller
Anchor Well on Forward Deck
Welded SS Pulpit (Double Rails)
Welded SS Stern Rail (Double Rails)
SS Life Line Stanchions (Double)
Life Line Boarding Gate (STBD)
Recessed Inboard Jib Tracks
Thru Bolted Hull to Deck Joint

SPARS AND RIGGING:

Anodized Spars
Keel Stepped Mast
Double Lower Shrouds
Single Spreader Rig
Main Halyard Winch
Genoa Halyard Winch
Jiffy Reefing Winch
Pre-stretched Rope Halyards
Adjustable Outhaul
Adjustable Topping Lift
Jiffy Reefing on Boom
Sheets and Blocks

DIESEL AUXILIARY:

3 Cyl. Universal 24 HP Fresh Water Cooled
2:1 Reduction Gear
3 Blade Propeller
21 gal. Fuel Tank
Dual Fuel Filter
Waterlock Muffler
Tachometer & Water Temperature Gauge
Wire Rein. Multiply Exhaust Hose
Adjustable Engine Mounts
Drip Pan
1" Bronze Propeller Shaft
Pedestal Mounted Engine Controls
Alternator
Full Ventilation
Sound-deadened Engine Compartment

TANKS & PLUMBING:

3 Water Tanks (74 gal. total)
SS Sink in Head
Deep Double SS Galley Sink
Teak Grate Shower Sump
U.L. Marine Listed Thru-bolted Seacocks with Handles
Cockpit Seat Scuppers
Bronze Cockpit Sole Scuppers
Flush Mounted Bilge Pump
Remote Alcohol Tank
Head with 35 gal. Holding Tank
Pressurized Hot & Cold Water System
Manual Backup Water System in Galley

ELECTRICAL:

Circuit Breakers-D.C. Electrical Panel
Spare Circuits
Dual Batteries
110V Shore Power
Battery Voltmeter
Vaporproof Battery Switch
Ample Interior Lighting
Full Navigation Lighting
Fore Deck Light and Steaming Light on Spar
Lightning Ground System
Bonded Underwater Hardware

INTERIOR:

Interior Wood Teak and Select Hardwoods
Berths for Six
Teak and Holly Sole
Bureau in Forward Cabin
Drawers under V Berth
Opening Skylight over V Berth
Shelves over V Berth
Spacious Head with Sink and Shower
Shower Grate
Cabinets
Storage Locker
Hamper
Hanging Locker
3 Berth Main Cabin (1 Double)
Bulkhead Mounted Dining Table
Ample Storage
Navigation Station
Navigator's Quarter Berth
"U" Shaped Galley
Deep Double SS Sink
Large Ice Box
Gimballed Stove with Oven & 3 Burners
Ample Galley Storage
HiPressure Laminant Counter Tops
4" Foam Cushions with Decorator Fabrics
10 Opening Bronze Ports
Main Cabin Opening Skylight

SAFETY GEAR:

Emergency Tiller
Lifelines with Offshore Pelican Hooks
Molded-in Non Skid on Decks (contrasting)
Lightning Ground System
Diesel Power
U.L. Listed Bronze Seacocks
Galley Restraint Bar
Jiffy Reefing
High Capacity Manual Bilge Pump
Bridge Deck
Large Cockpit Scuppers
Teak Toe Rails
Teak Grab Rails
Non-Slip Teak Cabin Sole
Navigation Lights
Main Hatch Seahood
Vented Grounded Fuel Tank
Engine Room Ventilation
Engine Drip Pan
Fused D.C. Electrical Panel
Bonded Underwater Hardware

Prices and Specifications subject to change without notice.



CAPE DORY YACHTS...a standard of value