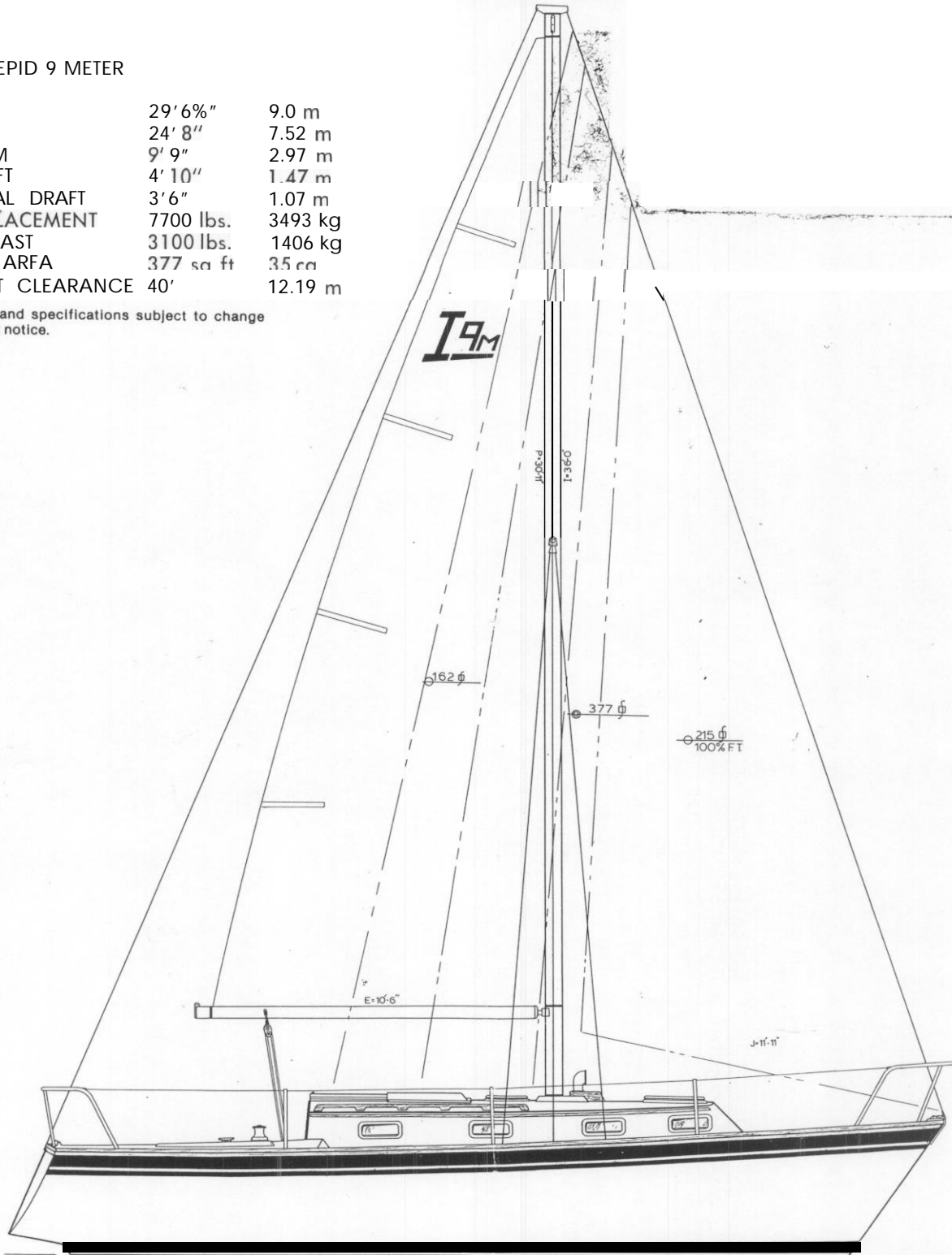


INNOVATION: THE INTREPID 9 METER

INTREPID 9 METER

LOA	29' 6"	9.0 m
LWL	24' 8"	7.52 m
BEAM	9' 9"	2.97 m
DRAFT	4' 10"	1.47 m
SHOAL DRAFT	3' 6"	1.07 m
DISPLACEMENT	7700 lbs.	3493 kg
BALLAST	3100 lbs.	1406 kg
SAIL AREA	377 sq ft	35 ca
MAST CLEARANCE	40'	12.19 m

Prices and specifications subject to change without notice.



Inspiration:

The inspiration for the INTREPID 9 METER comes from the luxurious and swift INTREPID 35. Many of the combined thoughts of **experienced** designers and naval **architects**, boat builders and woodworking craftsmen have gone into every aspect of the INTREPID 9 METER. The overall feeling of the boat is one that is very personal. The owner and his crew **will** experience the sensation of being aboard a boat that approaches "custom built" quality and detail in design and finish.



Intrepid 35: Inspiration for the Intrepid 9 Meter

"Living Space" is a luxury you can afford on the Intrepid 9 Meter

A boat is, after all, your home for a weekend, every weekend or for your vacation and every minute that you are aboard. So your boat should have room for people, the gear they want (and need) to be comfortable, and for those personal touches that mark your boat as an extension of your personality.

The INTREPID 9 METER has the room for **active sailing** and active living. From cockpit to cabin sole, you'll find that the INTREPID 9 METER was designed and built with real, **full-size** people in mind. There is standing headroom for six-footers throughout the main cabin. Five adults can sleep comfortably on deep, secure berths that are all at least **6'3"** long. There is **double-door**

privacy between the main and forward cabin. The cockpit is over seven feet long, with a bridge deck that makes a great "cocktail table." And, in addition to the large hanging locker in the head, there are numerous lockers, traps and alcoves for stowage of clothing, **linens**, gear, cameras, tapes and everything else you need to enjoy **life** aboard. (There are more than 24 feet of shelves for your books and gear.)

Here's All You Need To Know About

Intrepid's Construction:

We build INTREPID hulls from the best raw materials **available**, in a very carefully-controlled environment of **temperature** and humidity. Molding under optimum **conditions** results in beauty that's more than skin deep. These ideal conditions result in a cured lay-up that makes a super-strong hull.

INTREPID 9 METER's hull is **one-piece** molded fiberglass, with bronze through-hull fittings. The deck is one **piece** molded fiberglass with an end-grain balsa core that adds stiffness to the deck, **without** adding extra weight. The hull and deck are mechanically and **chemically** bonded together to assure a feeling of **security** and solidity every time you step aboard.

The interior is made up of more carefully molded fiberglass, such as the **headliner**, and the interior "pan" **which gives** extra strength to the entire boat because all interior parts from bunks to bulkheads and floor stringers are **built** up from it.

The spars and hardware are superior in **quality** to much that you see on the market today. We use the best materials we can find, **and** if we can't find what we want, we make it ourselves. (Compare the rig and hardware on INTREPID with any other boat: you'll not find any better regardless of **size** or price.)

Teak is used **extensively** to enhance the beauty of the INTREPID 9 METER. The entire length of the boat is handsomely accented with an attractive and very functional toe and rub rail. (**The rub rail will** protect the mirror-smooth white hull from

many dings and smudges over the **life** of the boat.)

The interior is finished in **teak**, hardwood **veneers** and formica for beauty and low maintenance. There is an **air** of warmth and quality to the entire layout and **finish** of the INTREPID 9 METER.

If You Like To Sail, You'll Love Sailing The Intrepid 9 Meter

Every time two sailboats appear on the same body of water, there is a race. Even if no one says anything, it appears to do anything, there is a race. Be a winner. **Sail** your INTREPID 9 METER as a flat-out racer on Saturday afternoon, and go for a fast **cruise** on Sunday, INTREPID will perform **like** a thoroughbred. The lines of this boat are **similar** to some of the hot, flat-out racers that grab all of the silver. But, they are not so racy as to make the boat hard to handle, or "**tricky**" to sail. She's stiff, **responsive**, and fast. You won't have to **apologize** that "she's just a **cruising** boat" to anyone.

The design features a fin keel for low wetted surface, and excellent upwind performance. A spade rudder is hung well aft, and is protected by a skeg. This gives excellent steering response under **sail** or power, while the skeg contributes to steering **stability**. It also guards the rudder from bumps, bangs and foulings.

Standard Equipment So Extensive You Can Just About Sail Away

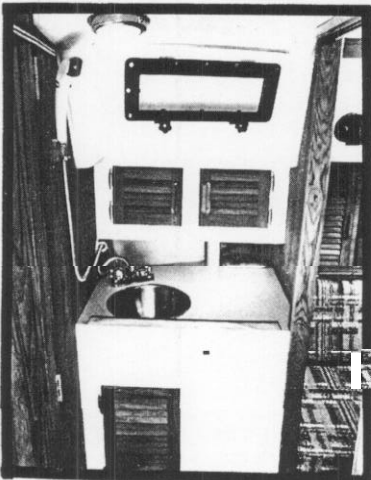
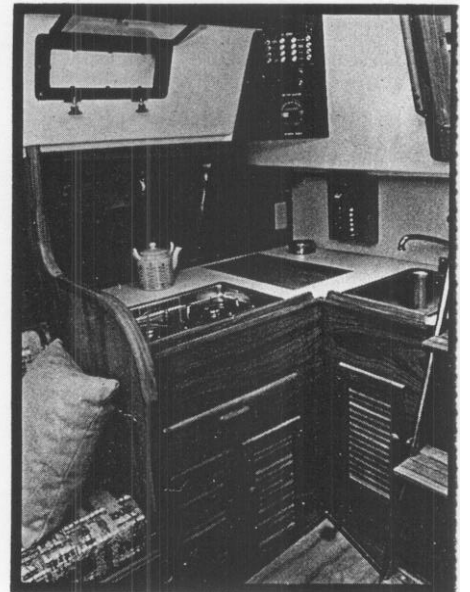
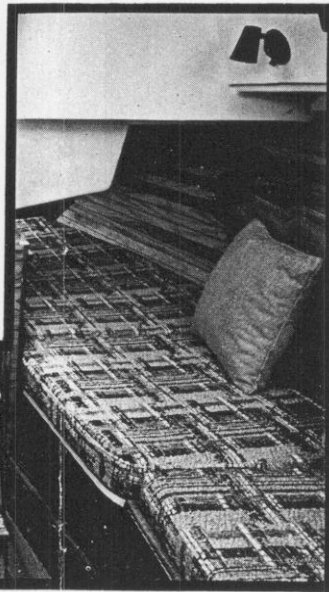
Look over the list of standard equipment on the back of **this** brochure. Everything from top-quality **Ulmer sails** to a two **cylinder** diesel engine is standard. About all you'll have to add is a compass, ground tackle and safety gear. (We left those out because everyone has his own preferences.) Just add fuel, water and a little wind and you're off on one of the best adventures of your **life**: the INTREPID **experience** is unforgettable.



▲ Spacious living accommodations for five

◀ with a comfortable galley to starboard and a convenient work/chart table to port

▼ which converts to a roomy quarter berth.



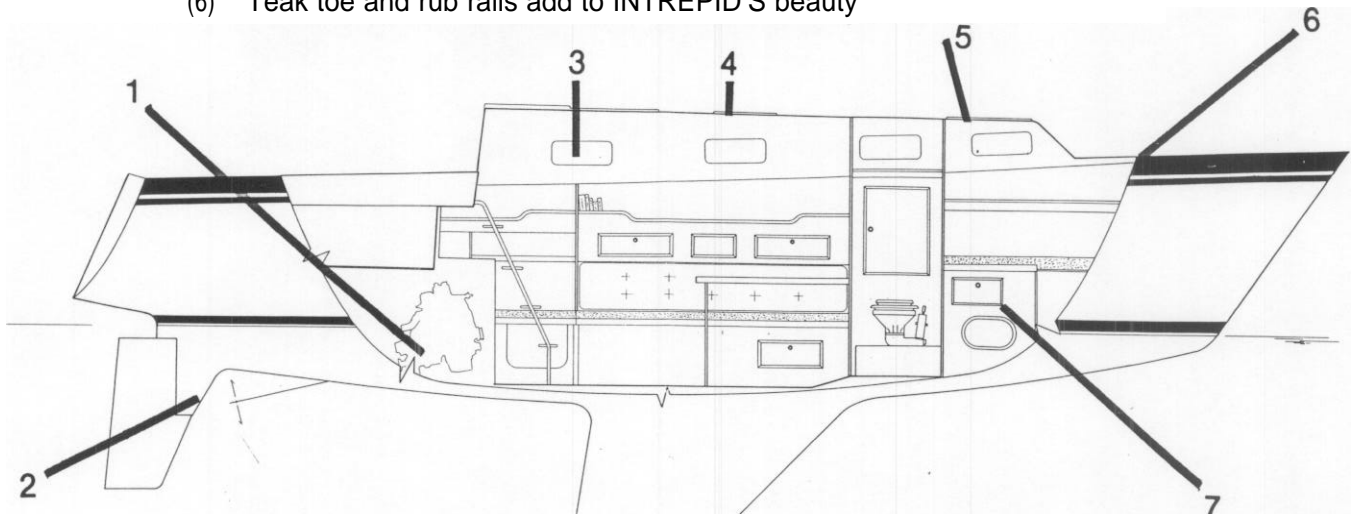
◀ A comfortable head area with full vanity to starboard

▲ A fully equipped "L" shaped galley

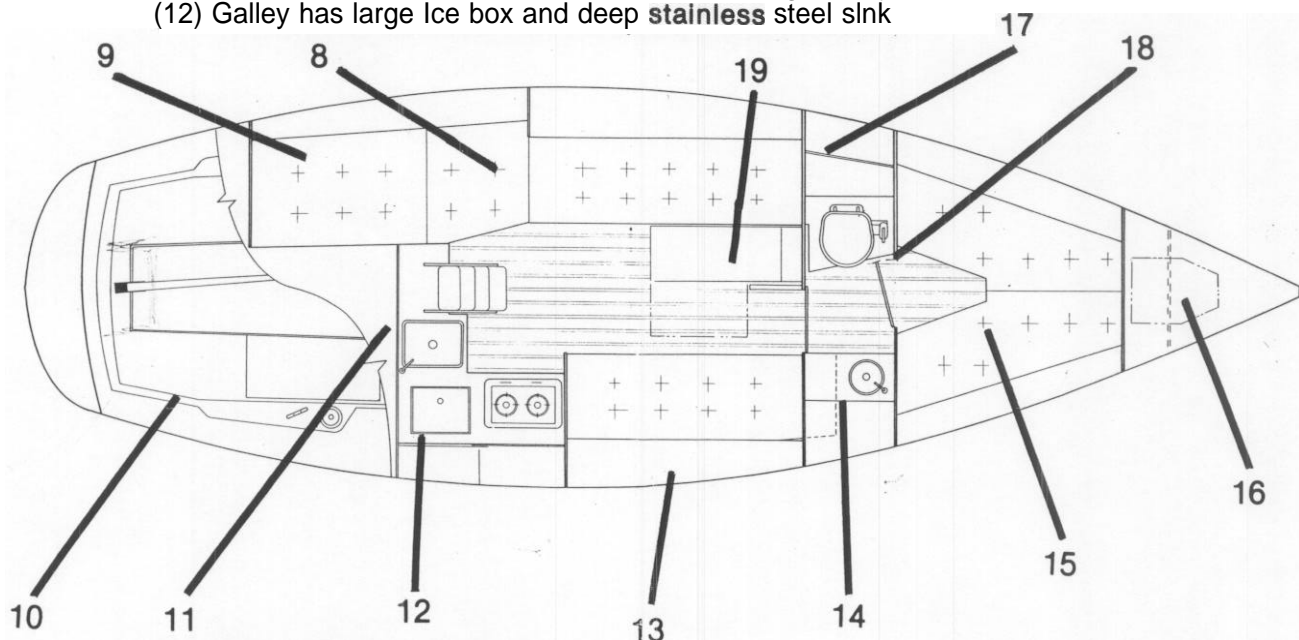
Compare:

Features, construction and finish are the basis of decision-making. We feel confident that you **will** choose wisely and invest in INTREPID.

- (1) Diesel engine can be hand cranked if battery is dead
- (2) **Skeg** helps steering, protects rudder
- (3) Eight **opening** ports plus Dorade vent for plenty of air
- (4) Low profile to deckhouse for great **visibility** from cockpit
- (5) Two **lexan skylights** (including forward hatch) for light below
- (6) Teak toe and rub rails add to INTREPID'S beauty



- (7) Lockers, shelves and alcoves are where you need them: everywhere
- (8) **Navigator's** table folds down to form quarter berth
- (9) A good place to stow sails and gear when things get busy
- (10) Cockpit is entertainment center and action-central: It's big and functional
- (11) Mainsheet traveler **aids** sail trim without being in way
- (12) Galley has large ice box and deep **stainless** steel sink



- (13) There are bookshelves over the berths with storage behind and under
- (14) The **vanity** sink has a **footpump**
- (15) **Like** the others, these bunks are **over 6'3"**
- (16) The anchor and rode stow here for easy access
- (17) There is a large hanging locker in the head
- (18) There are two doors separating the two cabins
- (19) Bulkhead mounted table moves up and out of the way when not in use

Intrepid 9 Meter Standard Equipment

EXTERIOR:

Hull **Color White**
Contrasting Sheer Strake
Molded in Non-skid
Boot Top
Flush Anchor Well on Foredeck
Full Length **Teak Toe Rails**
Full Length Teak Rub Strakes
Teak Taff **Rail**
Teak Grab Rails
Teak Tiller
Hinged Deep **Sail Locker (stbd)**
Hinged Gear Locker (port)
Opening Lexan and Aluminum Forward Hatch
Main Cabin Lexan Skylight
Sliding Companionway Hatch with Seahood
Teak Companionway Weather Boards
Bridge Deck
Teak Dorade Box with Vent
Anti-fouling Bottom **Paint/two** coats
All Lead External Fin Keel (affixed with 10 **3/4"** SS Bolts)
Solid Stainless Steel Rudder Post
All Opening Ports with **Screens (8)**
Scuppered Cockpit

INTERIOR

"L" Shaped Galley to Starboard
Large, fully insulated Ice Box
Flush mounted 2 Burner Alcohol **Stove**
Cutting Board Stove Cover
Deep Sink
36 gallon Fresh **Water Tank**
Galley Sink Foot Pump
Drawer and 3 Cabinets below Galley
Ample Stowage and Racks
High Pressure Laminate Galley **Surfaces**
Large **Engine Access**
SS and Teak Gangway
Chart Table to Port

Five Berth Layout — All Berths 6'3 **1/4"** or longer
4" Foam Fabric Covered Mattresses
Main Cabin Berth Back Rests
All Teak **Interior** (bulkheads and **trim**)
Teak and Holly Sole
Stowage Above and Below Berths
Bulkhead Mounted Folding **Main Cabin Table**
Fully Enclosed Private Head Area
Athwartships
Head to Port with 24 gallon Holding Tank and Deck Pump Out (hanging locker behind)
Vanity to Starboard (vanity foot **pump**)
Linen Stowage Above, Stowage Below
V Berth Area 2 Alcoves and 2 Drawers under P & S
Shelf Stowage above P & S
All Bronze U.L. listed Marine **Sea-cocks** below waterline (6)
Teak Grab Rails

DECK HARDWARE:

6" Bow Cleat
Large Bow Chocks
Stern Cleats with Chocks P & S
2 Speed Genoa Sheet **Winches**
Inboard and Outboard Genoa Tracks with Blocks, Cars and Sheets
Ball Bearing Main Sheet Traveler with Athwartship **Adjustment**
Traveler Mounted In Bridge Deck **Recess**
SS Bow Pulpit
SS Stem **Rail**
SS Stanchions (onislands) and **Life-lines** with Pelican Hooks
Manual Flush Mounted Bilge Pump In Cockpit
Locking Hasps on Hatches and Companionway

ENGINE AND ELECTRICAL

Diesel Inboard (2 cylinder)
Aluminum Fuel Tank (12 gal.) with Deck **Fill**
Remote Reading Fuel Level **Indicator**
Engine Alarm System
Recessed Engine Control Panel
Independent **Engine Pan**
Dual Fuel **Filtration**
Dual Lever Shift and Throttle Control
SS Waterlock Muffler
2 Cowl Vents for Engine **Ventilation**
2 Blade Fixed Propeller
2:1 Reduction Gearing
Marine Battery with 4 Position Vapor Proof **Switch**
Circuit Breaker Electrical System
Interior Lights for Galley, Navigation **Station**, Main Salon, Head and V Berth Area

SPARS AND RIGGING:

1/4" 1 x 19 SS Stays and Upper **Shrouds**
Single Spreader Masthead Rig
3116" 1 x 19 SS Double Lower **Shrouds**
Inboard Shrouds
SS Turnbuckles with Integral **Toggles**
All Rope Halyards (**prestretched**)
Jiffy Reefing Gear and **Lines** (2 reef **points**)
Adjustable Topping Lift
Fully Grounded Rigging with External Bronze Ground Plate (lightning)
Deck Light on Mast
Running Light on Mast
Mainsail with 2 Reef Points (**Ulmer**)
Working **Jib (Ulmer)**

INTREPID YACHTS

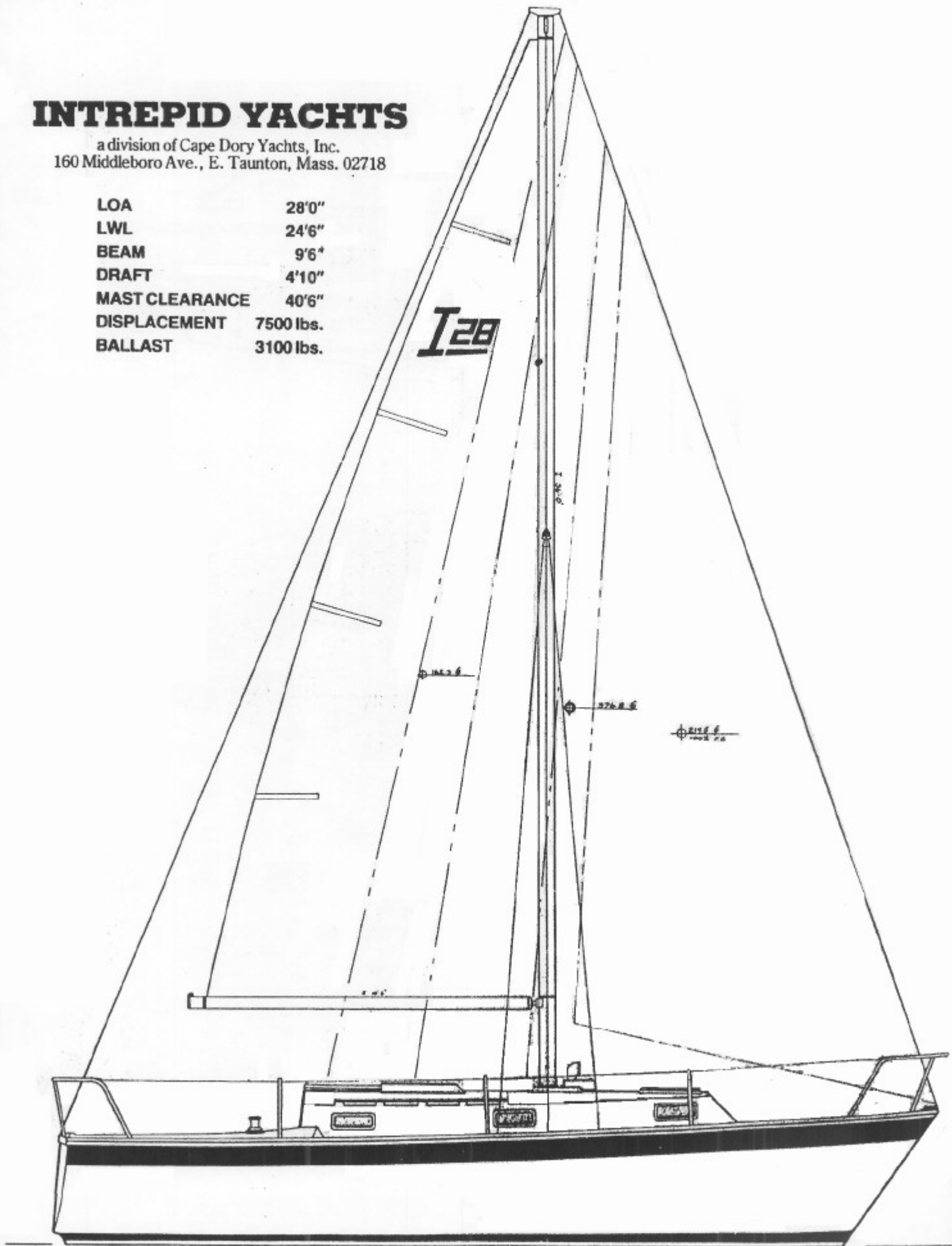
a division of Cape Dory Yachts, Inc.
160 Middleboro Ave., E. Taunton, Mass. 02718

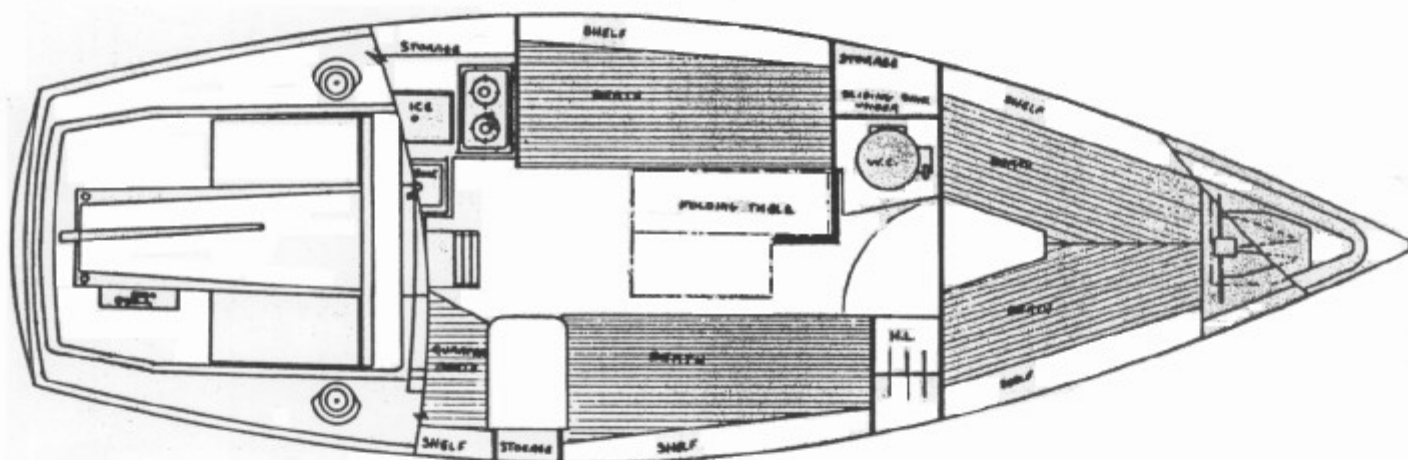
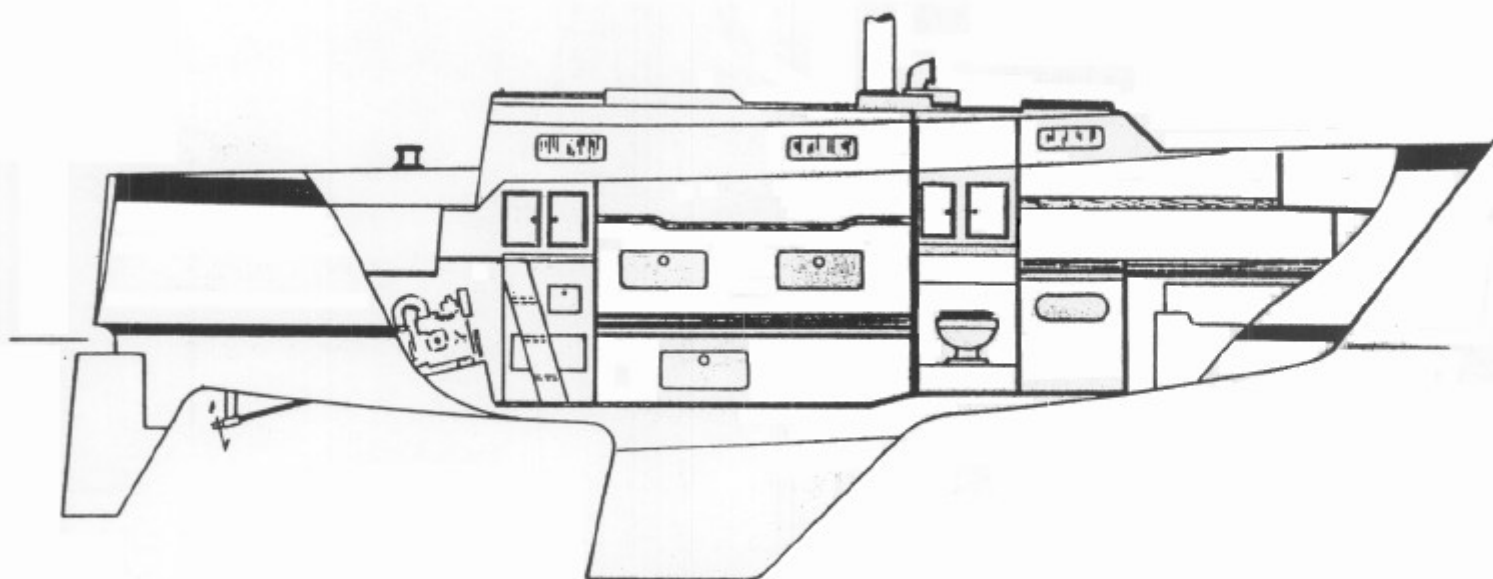
INTREPID YACHTS

a division of Cape Dory Yachts, Inc.
160 Middleboro Ave., E. Taunton, Mass. 02718

LOA	28'0"
LWL	24'6"
BEAM	9'6"
DRAFT	4'10"
MAST CLEARANCE	40'6"
DISPLACEMENT	7500 lbs.
BALLAST	3100 lbs.

I 28





INTREPID YACHTS

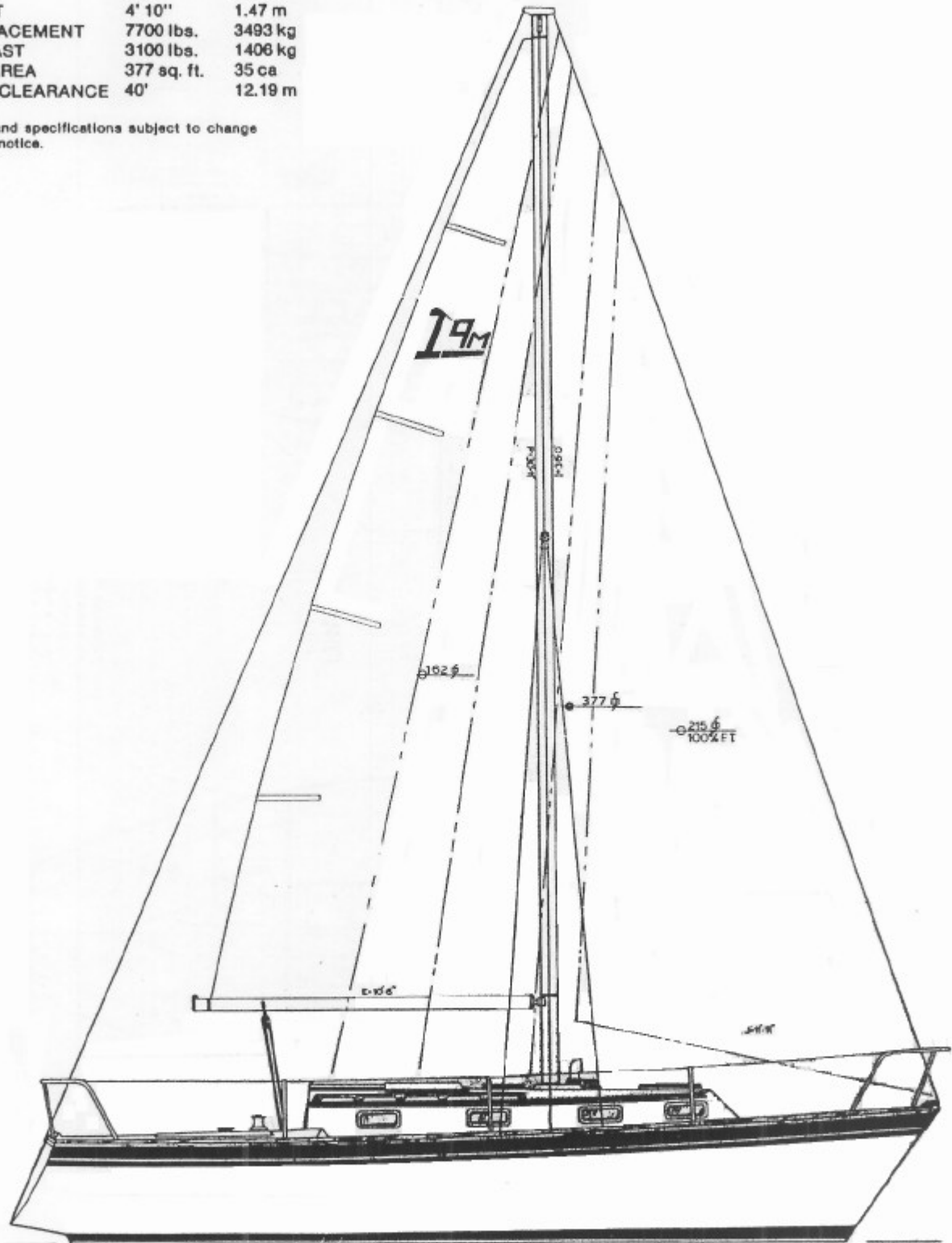
a division of Cape Dory Yachts, Inc.
 160 Middleboro Ave., E. Taunton, Mass. 02718

LOA	28'0"
LWL	24'6"
BEAM	9'6"
DRAFT	4'10"
MAST CLEARANCE	40'6"
DISPLACEMENT	7500 lbs.
BALLAST	3100 lbs.

INTREPID 9 METER

LOA	29' 6 1/2"	9.0 m
LWL	24' 8"	7.52 m
BEAM	9' 9"	2.97 m
DRAFT	4' 10"	1.47 m
DISPLACEMENT	7700 lbs.	3493 kg
BALLAST	3100 lbs.	1406 kg
SAIL AREA	377 sq. ft.	35 ca
MAST CLEARANCE	40'	12.19 m

Prices and specifications subject to change without notice.



INTREPID 9 METER

LOA	29' 6 1/2"	9.0 m
LWL	24' 8"	7.52 m
BEAM	9' 9"	2.97 m
DRAFT	4' 10"	1.47 m
DISPLACEMENT	7700 lbs.	3493 kg
BALLAST	3100 lbs.	1406 kg
SAIL AREA	377 sq. ft.	35 ca
MAST CLEARANCE	40'	12.19 m

Prices and specifications subject to change without notice.

