




CAPE DORY

25

...a standard
of value



CAPE DORY STORY:

When Andrew C. Vavolotis, founder and president of Cape Dory Yachts, Inc., built his first boat, his goal was to build a boat that sailed well, looked good, and met his high standards of quality. That was 17 years ago. His one man workshop is now a modern, highly efficient boatbuilding facility producing *full keel* boats for use all over the world.

The Cape Dory ideal has not changed in all these years. The basic "quality control" principles upon which Cape Dory was founded are still rigidly adhered to. Every step in production is carefully controlled and engineered. All work is closely inspected. An in-plant lab tests and checks materials. Each yacht is a credit to her owner and builder.

The graceful lines of Cape Dory Yachts are timeless. They will be as contemporary in another decade as they are now. More than anything else, the element that produces boats of Cape Dory's quality is the attention to detail by the men who build them.



Andrew C. Vavolotis, President
Cape Dory Yachts, Inc.



CAPE DORY 25...a standard of value

CAPE DORY 25...a standard of value

Cape Dory 25

The Cape Dory 25's handsome sloop design is both swift and seaworthy. She is another proud member of the "full keel" Cape Dory fleet the result of Cape Dory's craftsmanship, engineering and attention to detail.

Design

Sailors appreciate her easy motion and certain tracking, the result of a hull with fine lines and a "full keel" with attached rudder. Her graceful hull responds to the gentlest breeze or sudden gust. Cape Dory designed her to give excellent performance over a wide range of conditions. Her self-bailing cockpit is big enough for crew, 2 sail lockers and lazarette. A bridge deck helps make a safer cockpit and drier cabin. The locking lazarette hatch on her afterdeck covers a motor well that is spacious enough for optional outboard and fuel tanks. Molded-in non skid helps make sure footed crew movement over wet decks.

Rigging

The Cape Dory 25 is sloop rigged with a beautifully balanced, moderate sailplan. Her main is roller reefed

for easy sail handling and efficient sail trim. Her anodized spars and "overbuilt" rigging are carefully engineered and constructed to meet requirements often specified for much larger boats. She's fitted with the finest hardware and winches.

Interior

The thoughtful planning and painstaking efforts of Cape Dory designers and craftsmen are immediately evident below decks.

In the main cabin, there are comfortable bunks to port and starboard. A teak dining table stows away; the galley is located directly below the main companionway hatch for extra room, light and ventilation. The top-loading icebox is located beneath the companionway stairs for easy access. The galley is also equipped with a deep stainless steel sink, teak shelves, and ample storage areas. There is room for an optional two burner stove.

Between the main and forward cabins is a hanging locker and enclosed head. The forward cabin sleeps two and is complete with bronze opening ports and hatch.



Construction

Every hull and deck is built using Cape Dory's "quality engineered" methods. Every piece of fiberglass woven roving is hand laid in a precise location; the molding resin is carefully worked in by hand.

Deep into each hull, we securely fiberglass the molded ballast. A fiberglass liner or inner structure is permanently joined to the hull for added strength. It also becomes a moisture barrier that results in dry storage lockers that are easy to clean, as well as a drier boat.

Hull and decks are joined with Cape Dory's special bonding materials which incorporate the teak toe rail, assuring a solid, permanent joint.

The quality of every boat is carefully controlled through close inspection at every phase of construction. From start to finish, over 360 "quality control" inspections are made. We have never had a chain plate or hull to deck joint failure reported to us. Seventeen years of experience and our commitment to excellence are revealed in every Cape Dory we build. Cape Dory A Standard of Value.



CAPE DORY 25 ... a standard of value



Specifications

L.O.A.	24' 10"
L.W.L.	18' 0"
Beam	7' 3"
Draft	3' 0"
Displacement	4,000 lbs.
Ballast	1,700 lbs.
Sail Area	264 sq. ft.
Mast Height above W.L.	31 1/2'

Designer Cape Dory Yachts

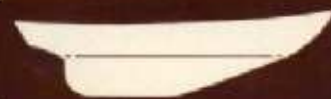
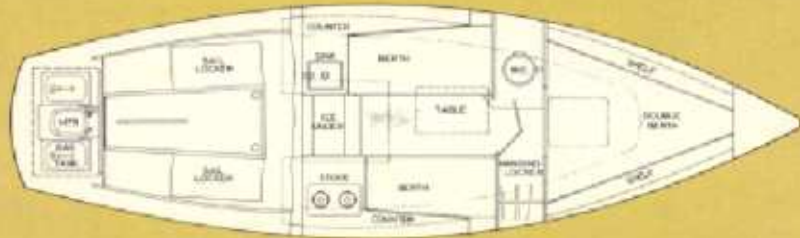
Cape Dory ... a standard of value

The 25 shares the same proud reputation as the other 3,000 full keel yachts built by this owner-operated company during the past 17 years. Cape Dory has consistently built boats of enviable quality and proven design. Boats that have withstood the tests of sea and time. Solid sailboats; solid investments.

Before you decide on any boat visit your nearest dealer and inspect a Cape Dory to fully understand boatbuilding excellence see how stable, responsive boats are built.

Write for a free catalog of the Cape Dory 19, 27, 28, 30, 33 or 36. Enclose \$5 and we'll forward an Owner's Manual.

Cape Dory Yacht reserves the right to alter prices and specifications without notice. Photos may show some optional equipment.



CAPE DORY YACHTS